

# Piattaforma di intelligenza artificiale per la creazione del digital twins di ambienti fisici di supporto alla gestione dei flussi e della presenza del personale

*Roberto Navoni*  
CEO





# SophyAI

## **AGENDA:**

### **Sophy Technology Review**

- SophyAI Edge Neural Network.
- SophyAI Edge / Cloud Workflow.
- SophyAI Cloud Neural Network (WIP).

### **Sophy AI Case History**

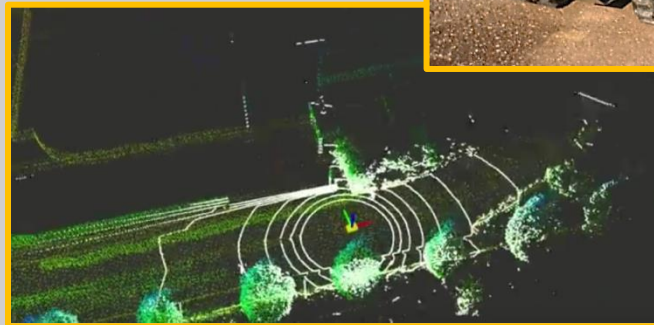
- Covid 19 (Rina, PoliMi , FARAM)
- Robotics (Autostrade, Enel, MDB , Iren )
- Building Managment (PoliMI, Calcestruzzi , SOL , SmartSpace)

## **Q&A**

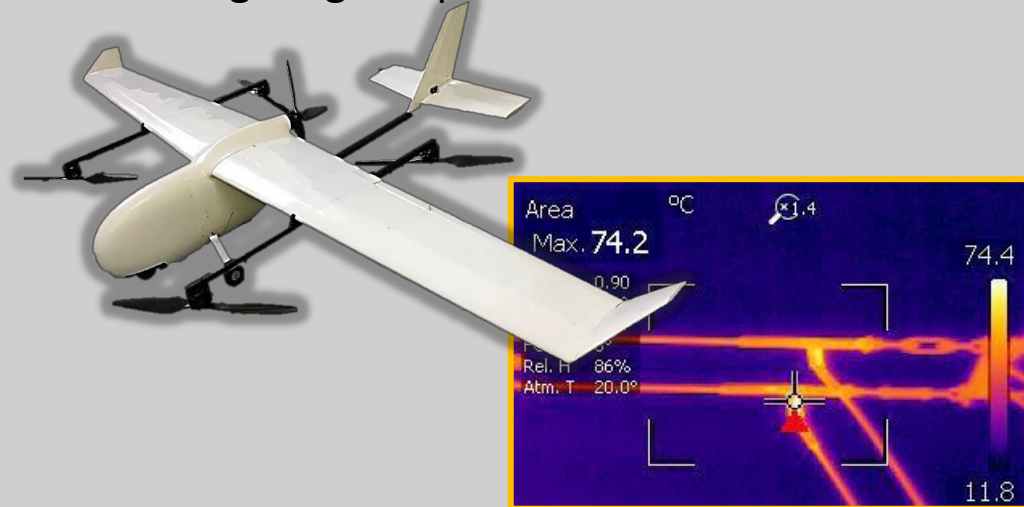
# The company background: Robotic applications in non-destructive inspection services



**Autonomous rovers** for road-work operation and gallery inspections safety and indoor SLAM



**Vertical Take Off and Landing drone** for long range inspections



**Autonomous bathymetry with sonar**





# The company background:

## Mobile robotics use case



**Maintenance (inspection), security, construction**  
monitoring of large solar power plants



**Volume computation of aggregates in**  
quarries with drones



**Autonomous inspection**  
of hydrolizers and  
burners in coal power  
plants, dams (outdoor  
and indoor, poor  
communication, toxic  
environments)

# Our customers who have decided to use SophyAI

## Autonomous Robotics



## Infrastructure Management



**Calcestruzzi**  
HEIDELBERGCEMENT Group



**FARAM**



**POLITECNICO**  
MILANO 1863



**Tenaris**



**UNIVERSITÀ**  
**POLITECNICA**  
**DELLE MARCHE**



**BOSCH**



**SOL**

**autostrade** // per l'italia

## HD & AI Data Collection

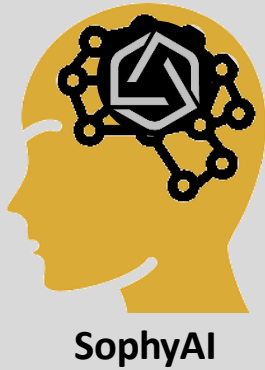
**enel x**



**Current SophyAI clients**

*List of clients not exhaustive*

# A Backend integrated with the sensors (e.g. Cameras) of a site

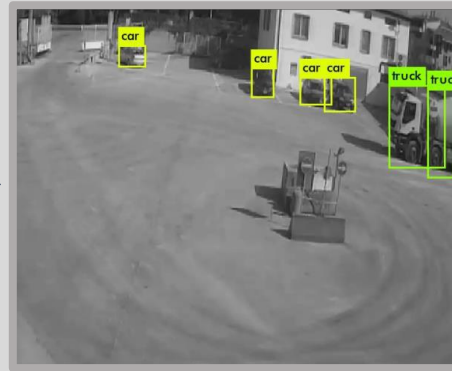


- **Detect** the event present in the scene
- **Localize** it in a digital twin of the site
- **Inform** a workflow system

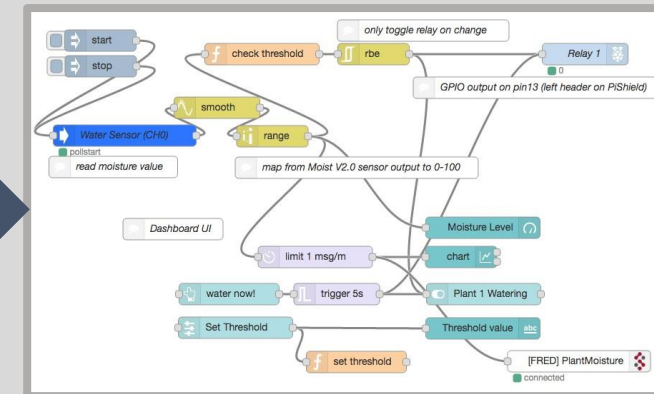
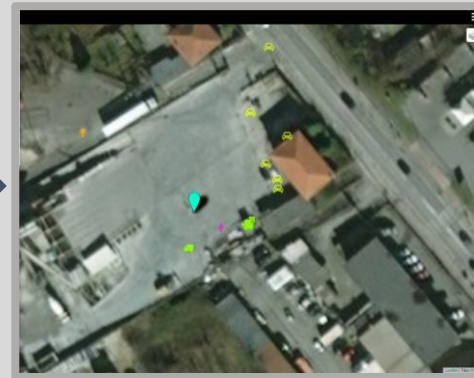
\* Patented Technology



CCTV / IP cameras  
SCADA/IoT protocols



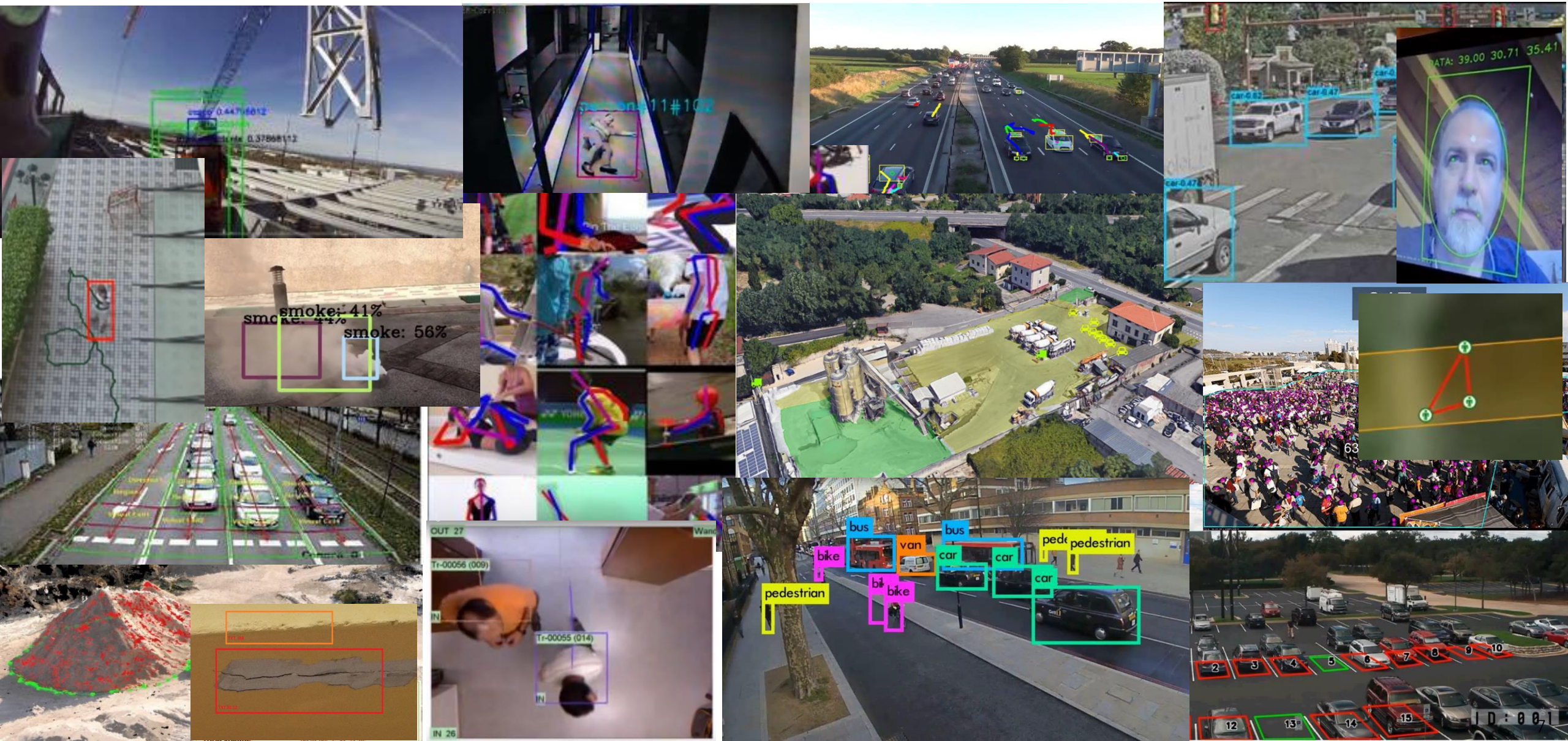
No video storage (GDPR compliant)  
Space-Time Ontology representation



Connects to web/mobile  
frontends

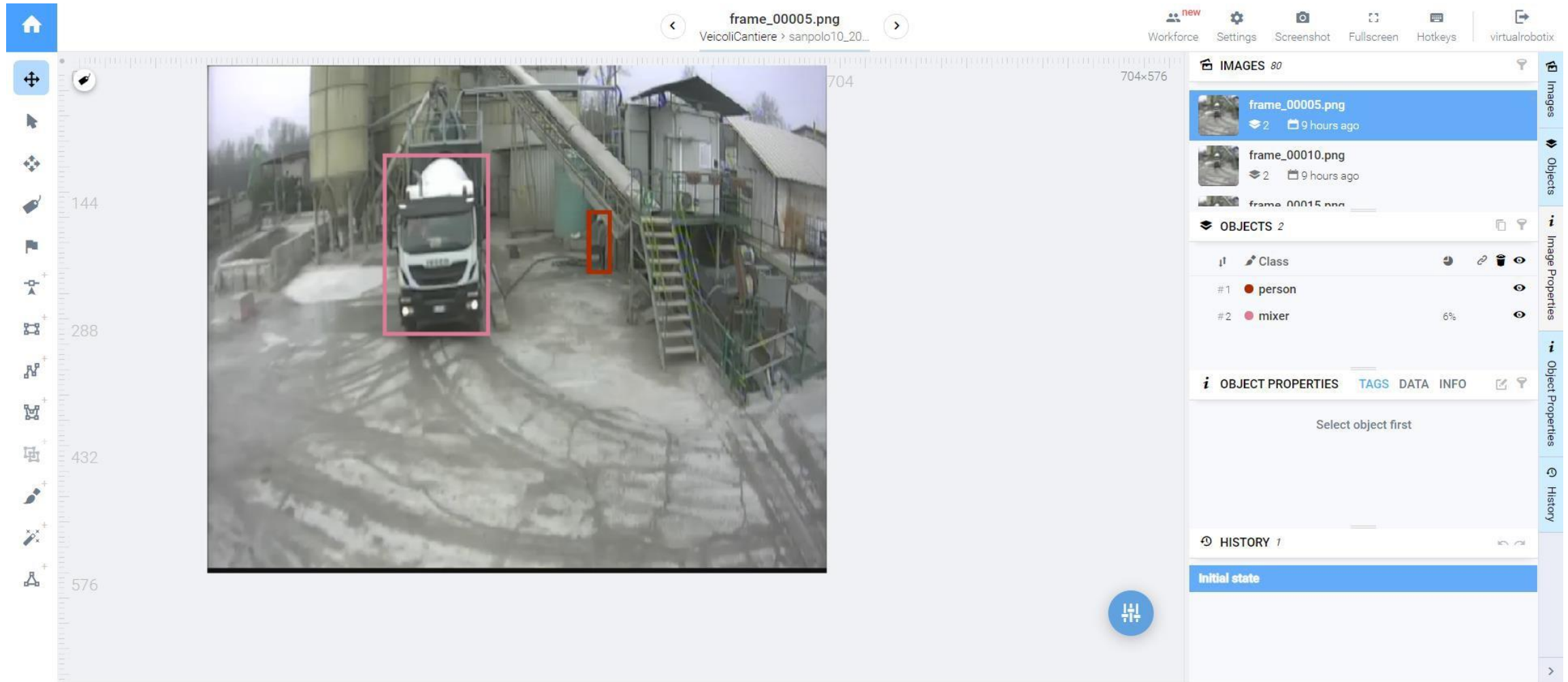


# SophyAI algorithms: classification/identification/volume estimation/counting/ tracking/object status/localization





# SOPHYAI : CUSTOM AI DATASET IMAGE AUTO GENERATED BY SOPHYAI SMART SENSE RECORDING





# SOPHYAI : TRAIN GRAPH AFTER 28 TRAINING EPOCH

Train graph

0

Loss

Train



Checkpoints

#	CHECKPOINT INFO	STATUS	
1	{ "epoch": 0, "val_metrics": { "loss": 0.093311 } }	Unused	CREATE MODEL
2	{ "epoch": 1, "val_metrics": { "loss": 0.40016 } }	Unused	CREATE MODEL
3	{ "epoch": 2, "val_metrics": { "loss": 0.084577 } }	Unused	CREATE MODEL
4	{ "epoch": 3, "val_metrics": { "loss": 0.027432 } }	Unused	CREATE MODEL
5	{ "epoch": 4, "val_metrics": { "loss": 0.033354 } }	Unused	CREATE MODEL
6	{ "epoch": 5, "val_metrics": { "loss": 0.037595 } }	Unused	CREATE MODEL

MOVE UNUSED TO TRASH BIN

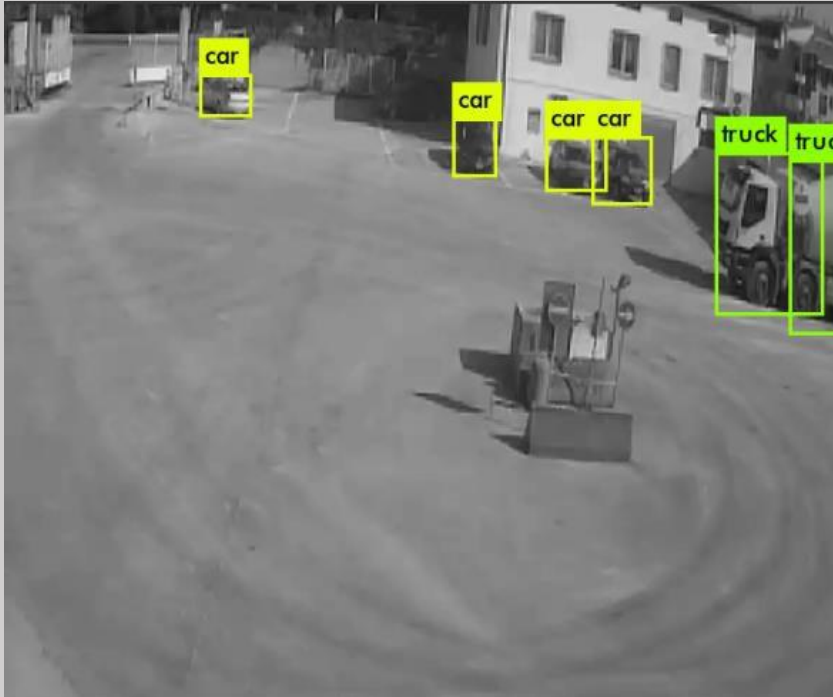
27.903469  
Train: 0.068818

# Privacy proven scenario digitization

## The Sophy AI inference to understand the scenario

- Inference module receives camera streaming; it now supports 24 different algorithms
- The algorithms produce metadata and trasmits by broker MQTT/KAFKA to localization module
- Map update in realtime, 4hz update rates
- GDPR compliant, images are not stored

### Original image from camera stream



### Metadata produced by inference process

```
{
  "header": {
    "stamp": {
      "secs": 1561138559,
      "nsecs": 29409546
    },
    "frame_id": "scivolo",
    "seq": 132551
  },
  "location": {
    "acc": 0,
    "topic": "",
    "rad": 0,
    "p": 0.0,
    "vac": 0,
    "lon": 9.847288131713867,
    "inregions": [],
    "vel": 0,
    "tid": "",
    "batt": 0,
    "t": "",
    "cog": 0.0,
    "lat": 45.511722564697266,
    "alt": 0,
    "cp": false,
    "type": "",
    "tst": 0,
    "conn": ""
  },
  "bbox": {
    "status": "TRACKED",
    "moving_status_age": 3851,
    "ymax": 96,
    "probability": 0.9801826241255153,
    "id_tracker": "697",
    "moving_status": "FIXED",
    "id_camera": "scivolo",
    "status_age": 8149,
    "last_detection": 1561138559,
    "moving_radius": 6,
    "xmax": 318,
    "xmin": 260,
    "first_detection": 1561130409,
    "ymin": 44,
    "Class": "car",
    "device_id": "/scivolo/localization_car_697"
  }
}
```

### Map Scenario: visualize all meta data together by Geoindex from camera, IoT and smart device





# SophyAI simple user configuration and interface

- 3D simulator to configure Sophy before installation in a real environment: simplification of cost evaluation and final configuration. After configuration, configurator can be used for 3D frontend in mobile and web configuration
- Map scenario visualization and object representation in the area
- Smart device for simple interaction with SophyAI
- Visual workflow configuration tools for a simple customization of the system in different user environments

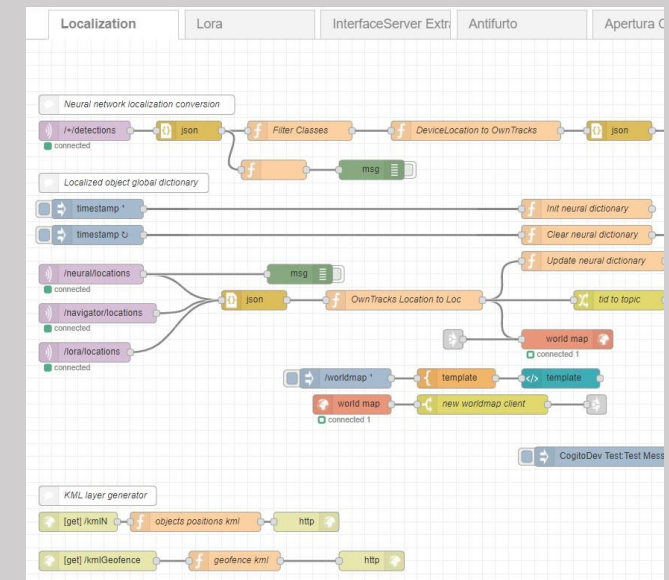
Sophy Assistance



Map Scenario



Visual Workflow Configuration Tools



Sophy 3D Simulator



# SophyAI prototype of Advanced 3D Enviroment



## BIM Integration

- SophyAI 3D Enviroment.
- Realtime Update.
- IOT Integration.
- VR / AR Solution
- Oculus Quest READY





# Easy to install at a client site. Designed to be scalable

## Easy configuration and dashboard

- 3D simulator for remote site configuration and cost eval
- Self-installation and configuration dashboards
- A simple black box installed on site

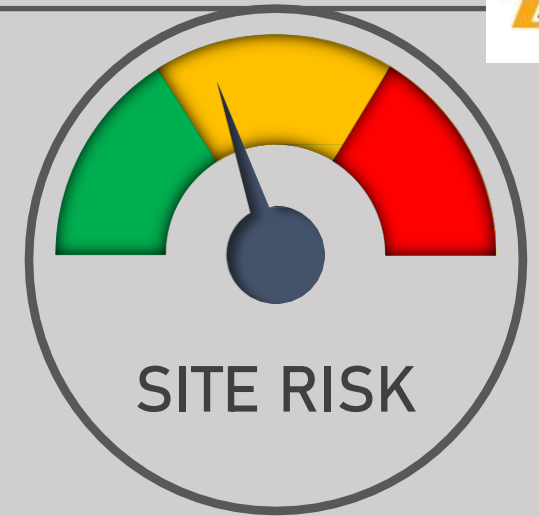
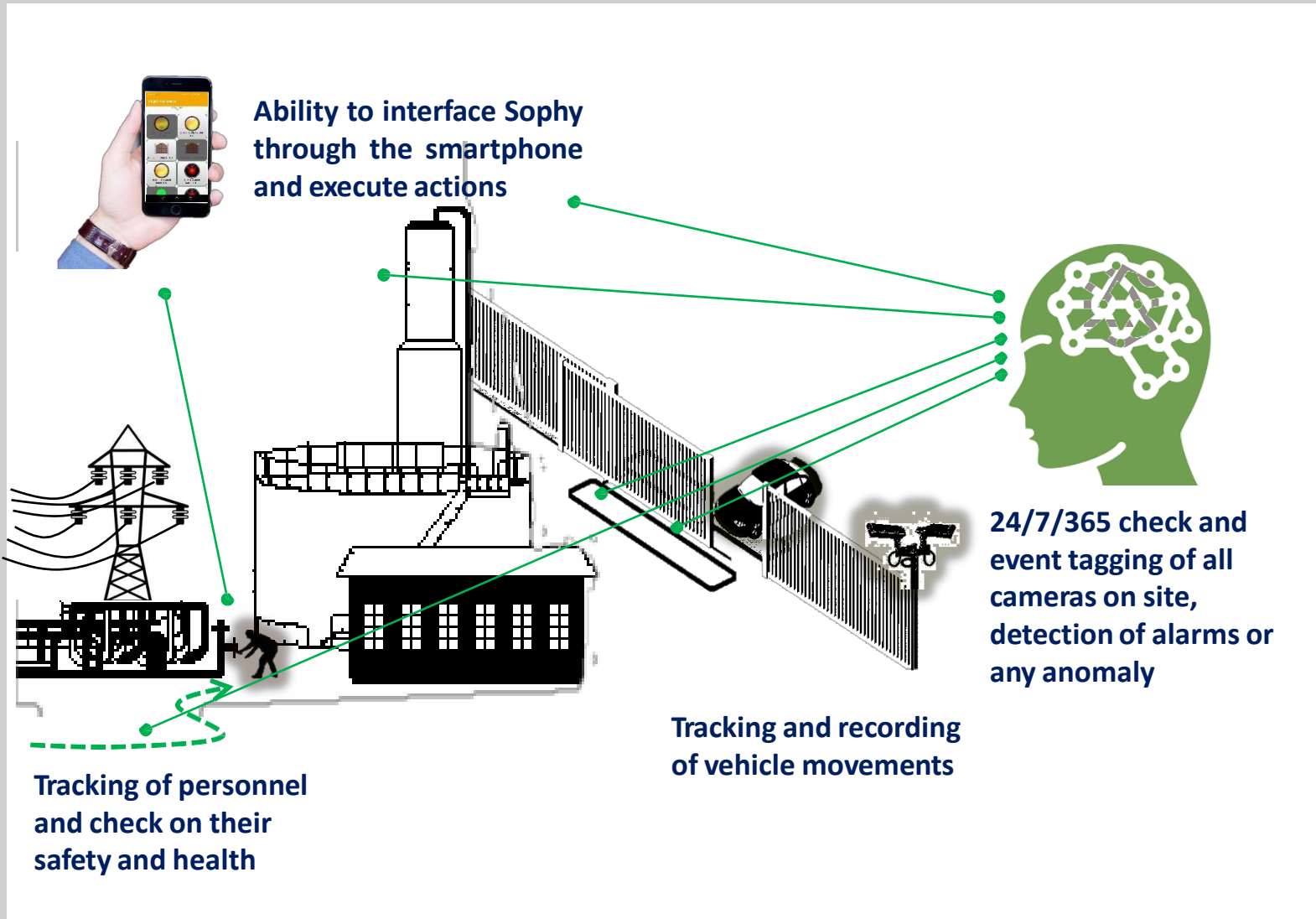
## Risk detection modules and correlation engine

- Risk analysis is formulated as an online optimization problem
- Localization and tracking of humans, vehicles, objects, machines in space and time

## Compatible with Industry 4.0

- Able to interface a plethora of digital cameras
- Fast system integration with IoT and future devices (RTSP, MQTT, KAFKA, FIWARE, MAVLINK)

# Providing a Key Risk Indicator to monitor security performance over time



Violation of safety work protocols



Injuries/fainting



Incidents detectable by smoke or noise



Unauthorized access of vehicle or person



Intrusions





**Case History “Robotics”**



### VR ROVER 3.0

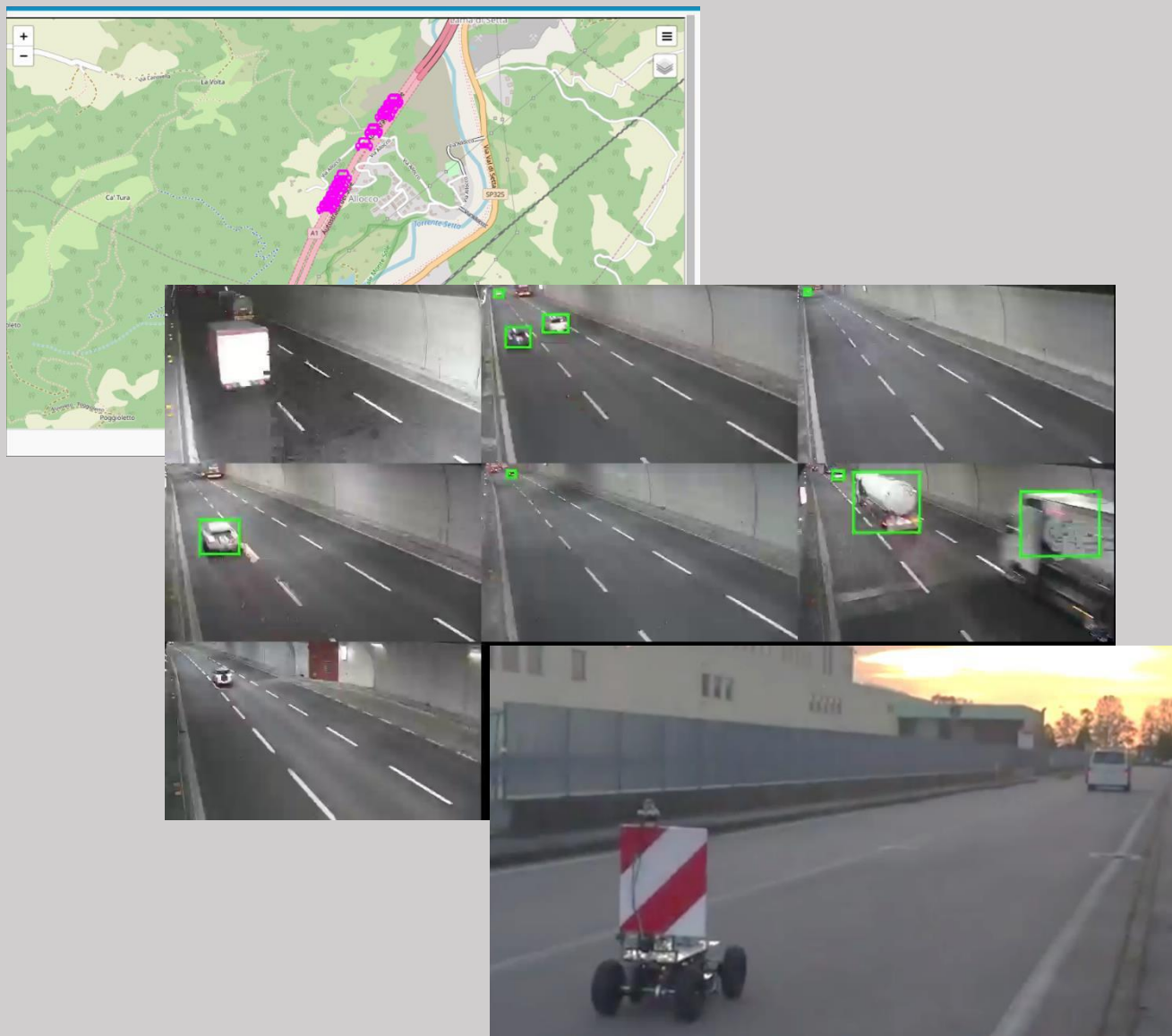
- Robot Terrestre Cingolato .
- Autonomous Navigation.
- Object Avoidance.
- SLAM : Localization and Mapping
- Rete di comunicazione auto installante .



### VR ROVER 4.0

- 4G – 5G Tele Operatiojn
- Robot Terrestre Cingolato .
- Autonomous Navigation.
- Object Advoidance.
- SLAM : Localization and Mapping
- Agricuture application.





- Installed in 1 tunnel, scalable to 200 tunnels in Italy, 20 in Chile
- Main functionality: AID (automatic incident detection)
  - 18-30 cameras per tunnel
  - 1 EdgeAI processor based on a \$1.000 Nvidia, each managing 30 cameras
  - Checks of number of cars in tunnel
  - Checks the speed, direction, status (in movement/still in emergency, U-turn)
  - Detects smoke or fire inside the gallery
  - Workflow: if some alerts are detected, alarm is sent and the system can immediately prevent access to galleries
  - Activates alert messages on roads panels
  - Sends location of alarm to safety and security workers
  - Sends location of alarm to police
  - Collision detection.





**Case History “COVID-19 Solution”**





**FARAM**



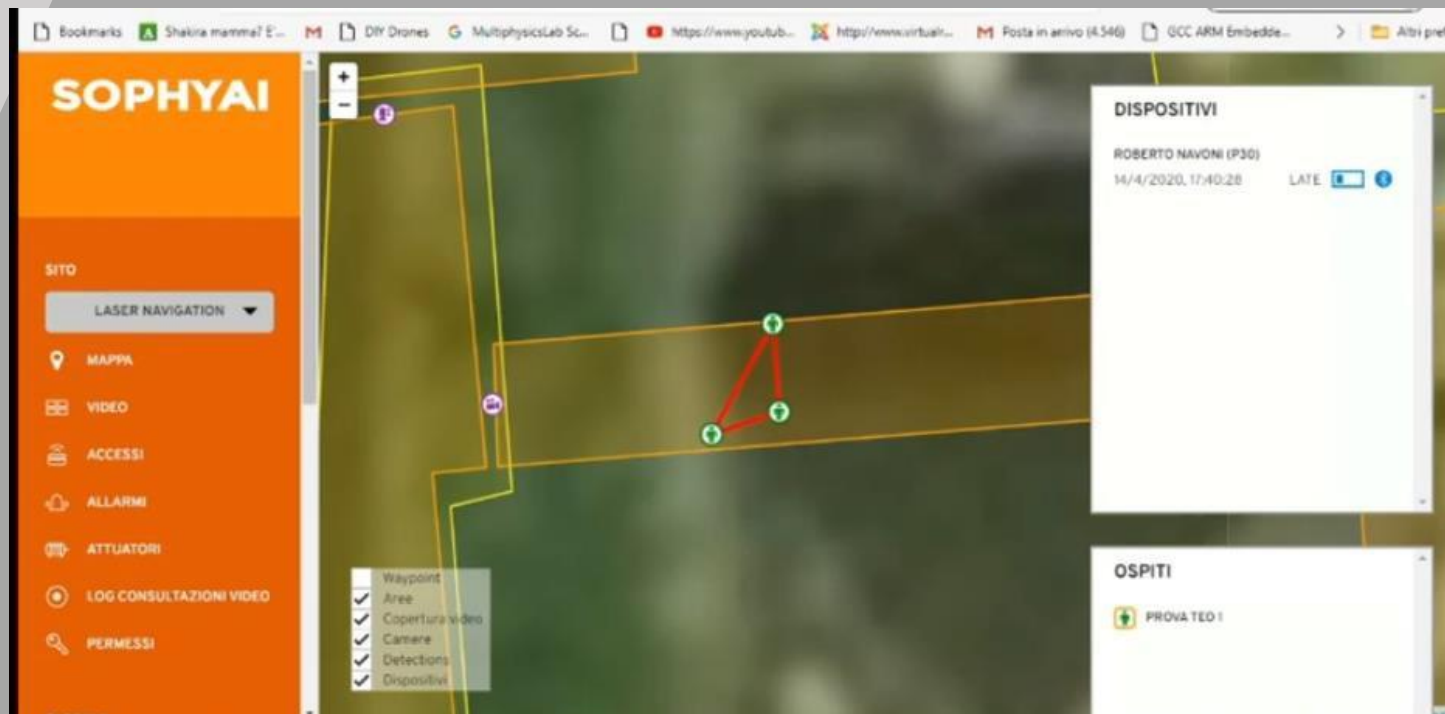
# COVID-19 SOLUTION: FARAM «ISOLA» Integrates our SophyAI Technology



# SOPHYAI COVID-19 Solution for Social Distancing



Automatic AI Social Distance algorithms



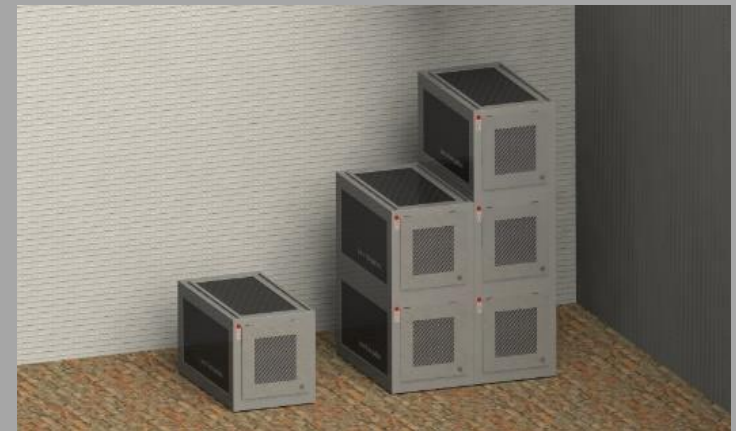
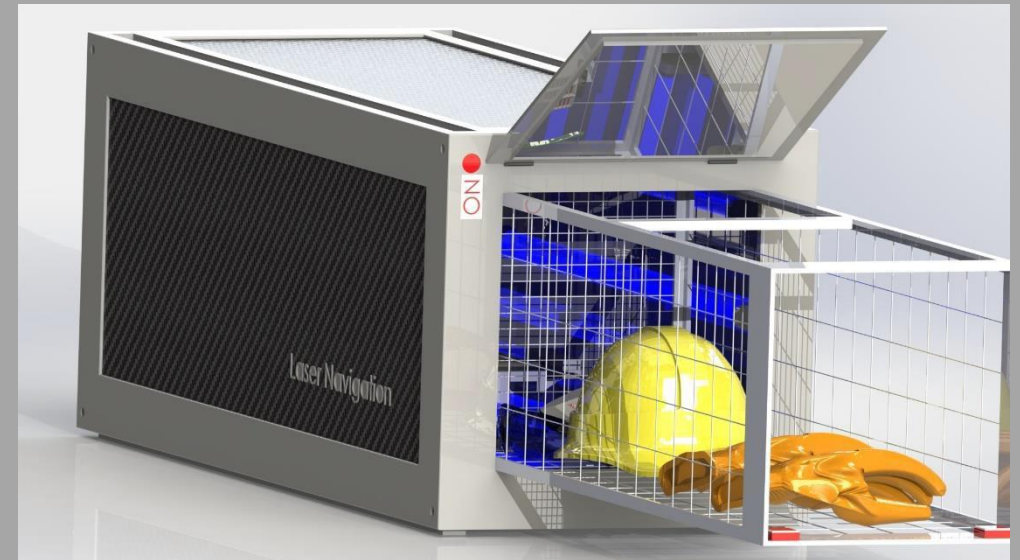
# SOPHYAI COVID-19 Solution

## Cleaning BOX

*PPE Safe Disinfection by UVC Rays*

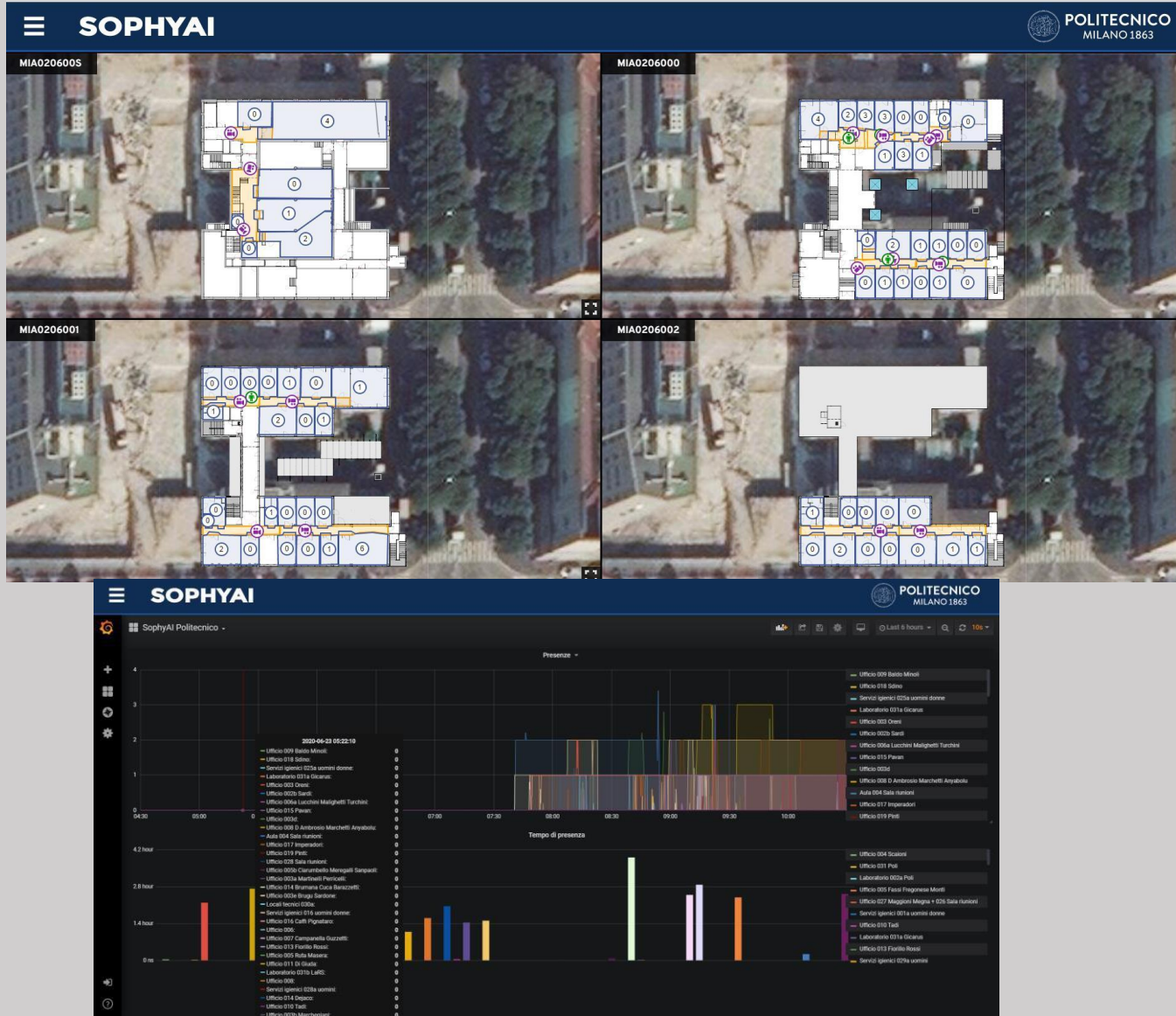
The use of UVC rays is widely used for the sterilization of medical components. Their action is to destroy the DNA and RNA of the pathogen by making it inert. These frequencies (254 nm.) are harmful to humans, so it is essential that they act only on what needs to be disinfected. The Cleaning Box allows the radiation inside it to be contained and the control intelligence prevents the system from being switched on without total shielding of the unit. The Cleaning Box is fully automated in relation to irradiation time and emission power. It allows an absolute operational simplicity that enables any worker to use it in complete safety. No technical personnel" is required for its use.

Combined with the SophyAI® artificial intelligence platform and the Sophy Assistance App , the Cleaning Box can control that all workers disinfect their PPE by checking, anonymously and in full compliance with the GDPR, that all workers carry out the disinfection process.





# SophyAI for rooms occupancy control

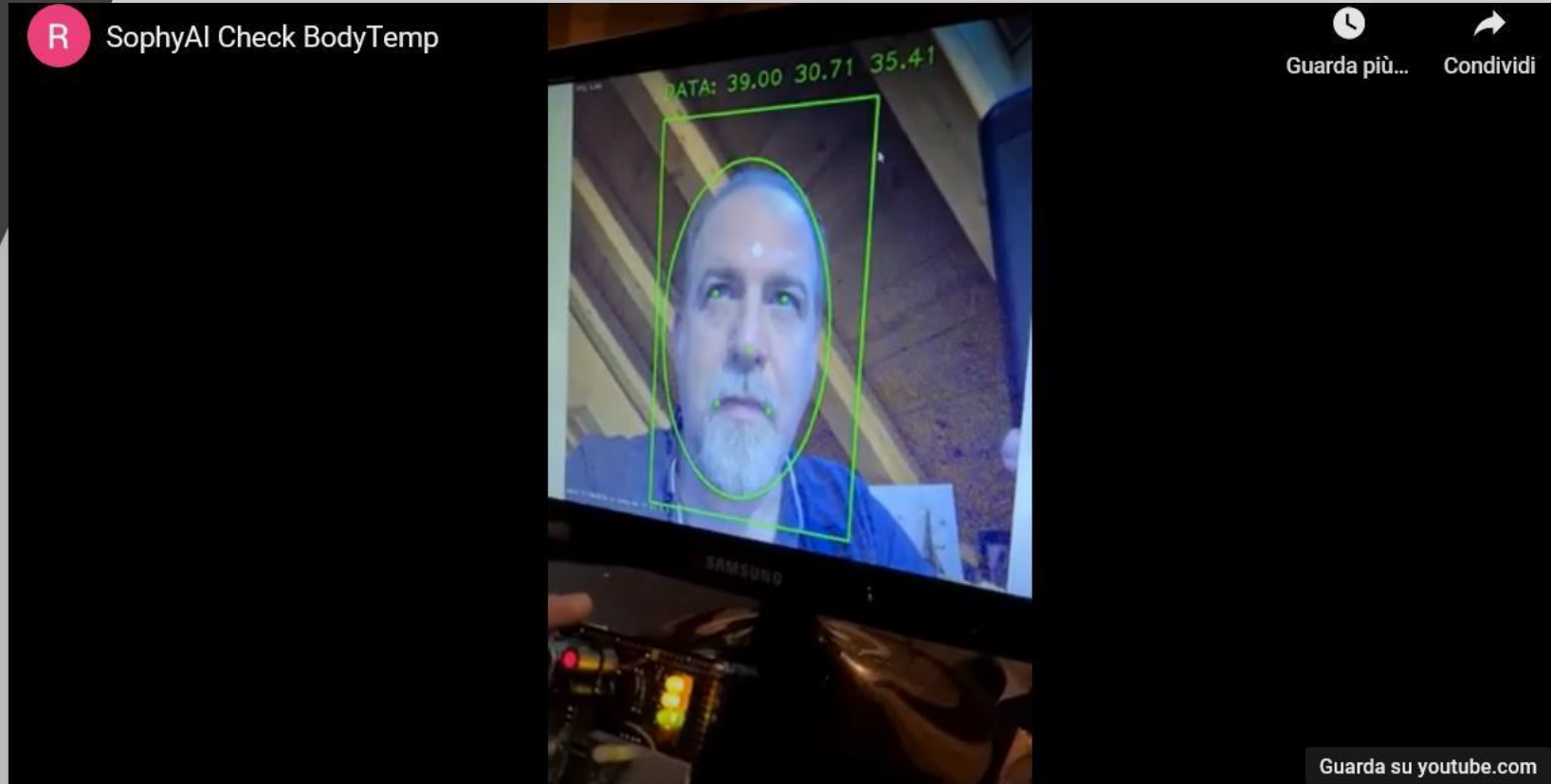


**Main functionality: costs reduction in rooms cleaning , sanification and gatherings control.**

- Anonymous control of the occupation (time and number of people) of the department's rooms
- Shift planning and optimization for the cleaning of the rooms according to their actual occupancy
- Control of gatherings in common areas
- Configurable summary synoptic of the occupations
- Generation of warnings/alarms for excessive crowds and spacing between people

# COVID-19

## SophyAI BODY TEMPERATURE CHECK IN

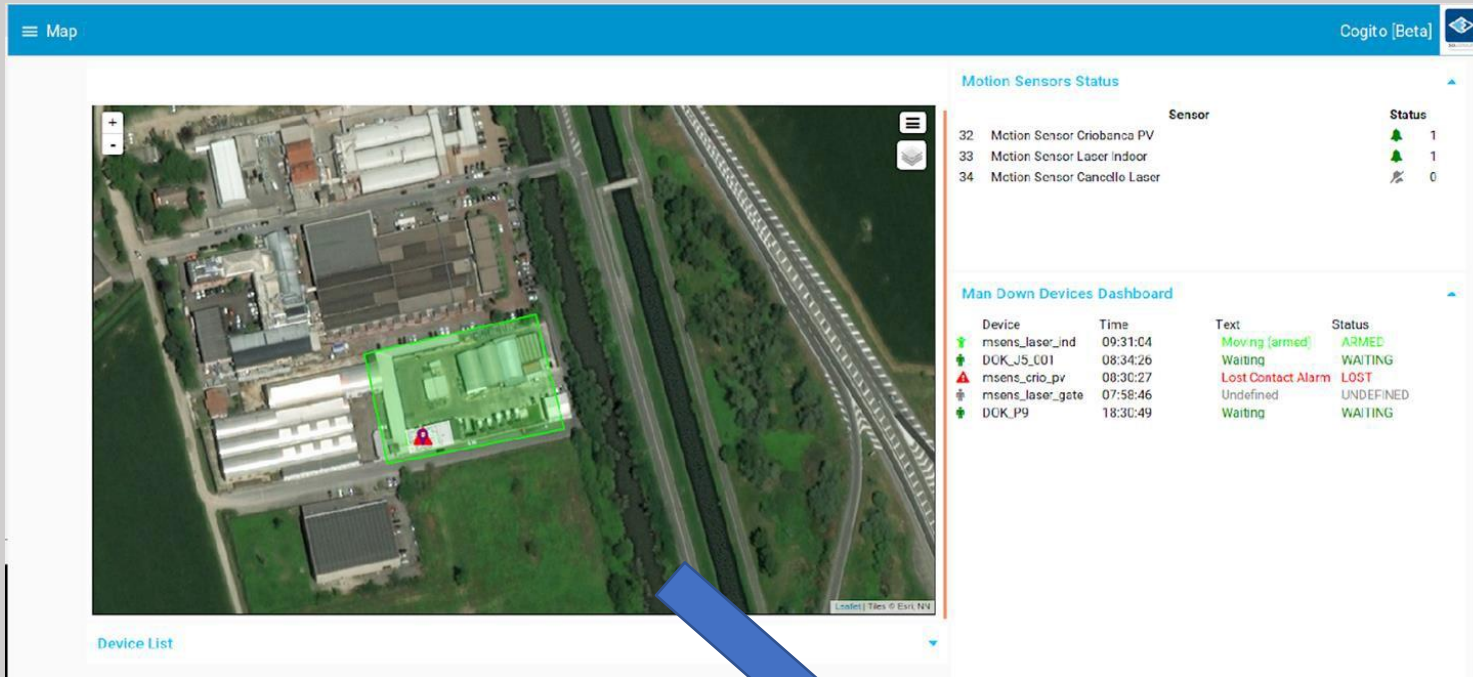




**Case History “Building Managments”**

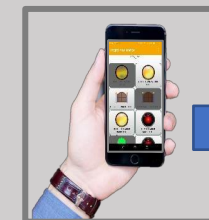


# SophyAI assistance installed in one site of a cryobank (nitrogen)



**Main function: Safety of people inside a dangerous environment in a cryobank**

- 7 cameras
- Previously workers had to push a button every 5 minutes to confirm ok
- Control and historicization of people entries
- Geofence, time zones control
- Automatic danger messages: Man Down or person in not authorized area
- Automatic actions when a man is found down



# SophyAI in Healthcare:

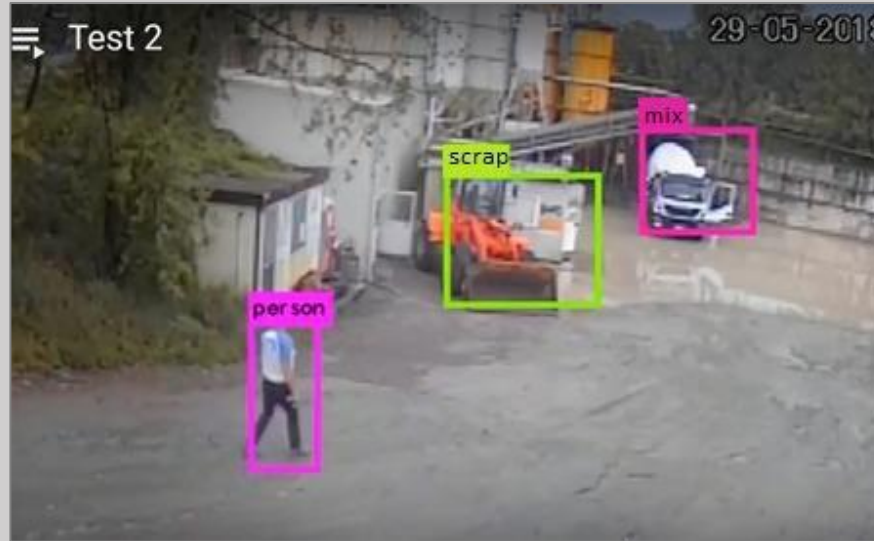
## Home care services for the safety of elderly people

- **SophyAI can define how one or more patients behave within a specific area**
- **The non-invasive, privacy-proven identification of elderly people and hospitalized patient behavior can open up extremely interesting scenarios for hospitals, nursing homes, homecare**
- If the elderly person is in bed, SophyAI can tell the story of movements from the bed during day and night
- What route does he take (e.g. how many times to the bathroom and how long he stays there, alarms generated if he does not return to the room within a certain period)
- If he leaves the room (alerts and alarms can be generated)
- If, while walking, has anomalies in change of direction towards an initial trajectory
- If the elderly falls to the ground (man down)
- Total privacy, no identification, only metadata are transmitted





# SophyAI assistance currently installed in ten unmanned sites for cement delivery in Italy



## Goals

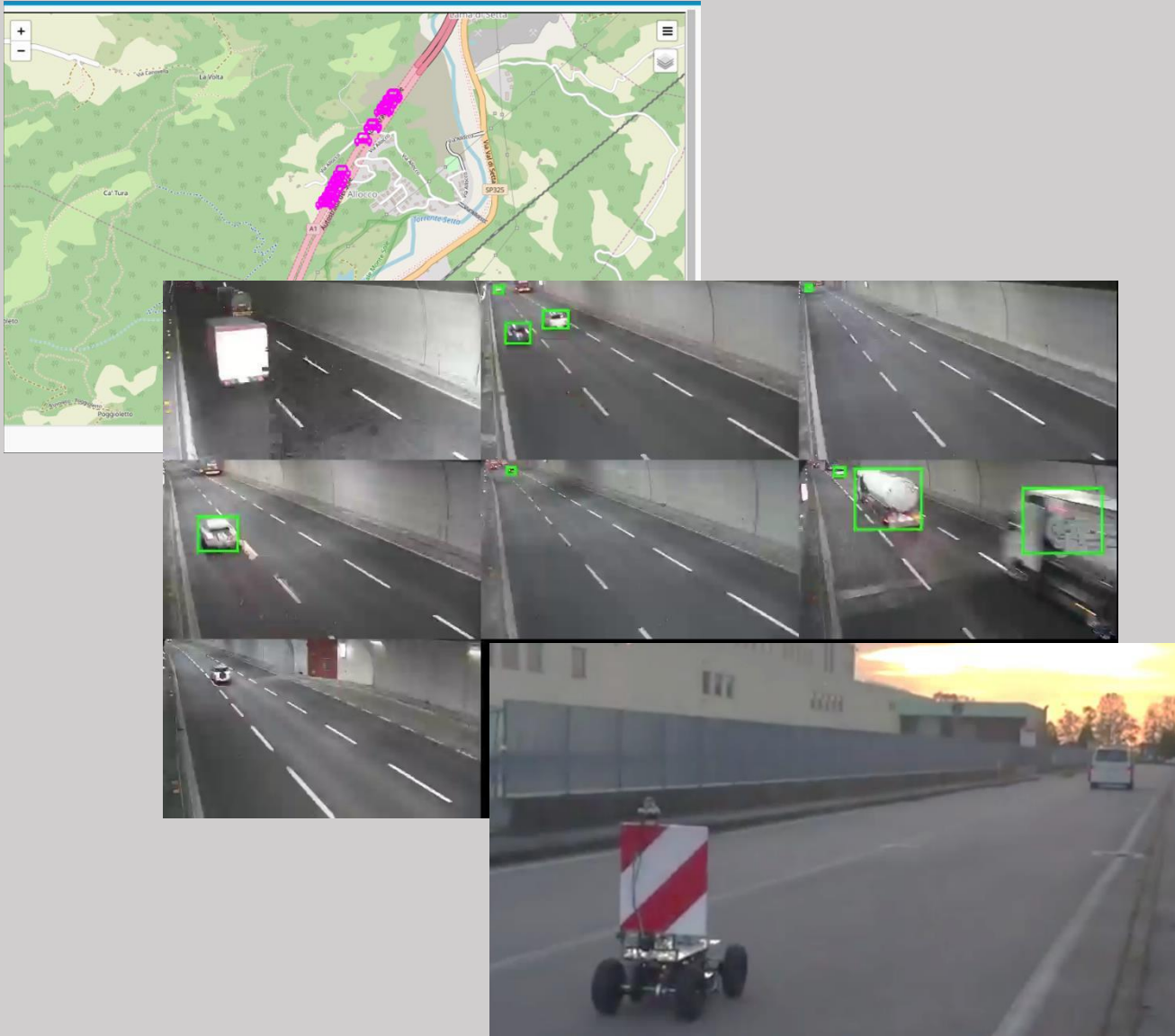
- **Safety and security of unmanned plant**
- **Cost reduction**
- Experimental Plant already implemented
- Additional 120 Plant to implement
- 12 Cameras per site, 1 Xavier for each site

## Main Functionalities:

- Position of people, trucks, cars
- Control and backlog of people entries
- Identification and localization of people inside the plant
- Integration with smart and IoT devices
- Geofence, time zones control
- Check of protective equipment (helmets, etc)
- Automatic alert messages: Man down or Person in not authorized area
- Automatic actions (automatic gate opening, messages from speakers, mobile app interaction, etc.)

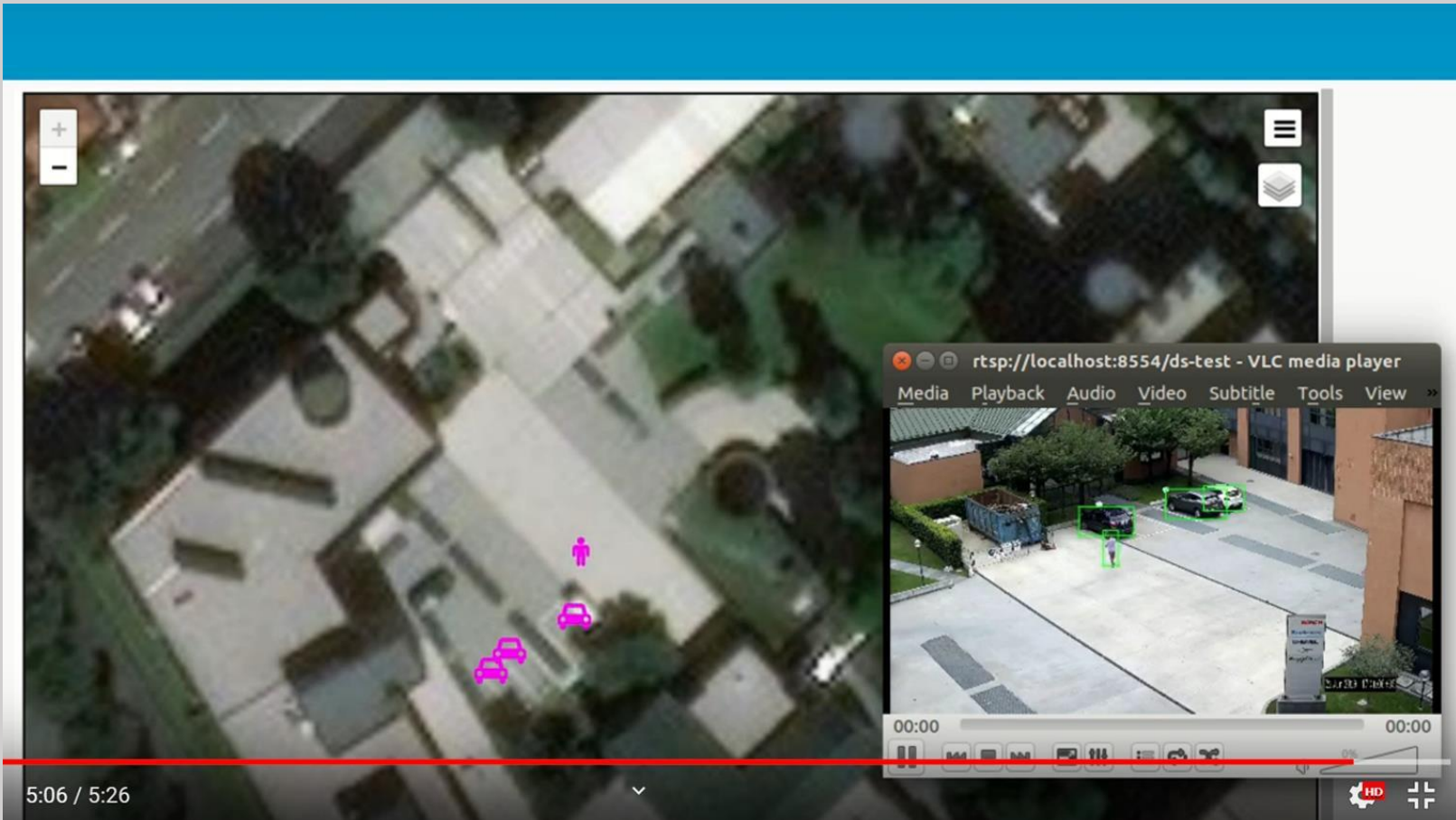


# SophyAI for traffic control inside a highway tunnel



- Installed in 1 tunnel, scalable to 200 tunnels in Italy, 20 in Chile
- Main functionality: AID (automatic incident detection)
  - 18-30 cameras per tunnel
  - 1 EdgeAI processor based on a \$1.000 Nvidia, each managing 18 cameras
  - Checks of number of cars in tunnel
  - Checks the speed, direction, status (in movement/still in emergency, U-turn)
  - Detects smoke or fire inside the gallery
  - Workflow: if some alerts are detected, alarm is sent and the system can immediately prevent access to galleries
  - Activates alert messages on roads panels
  - Sends location of alarm to safety and security workers
  - Sends location of alarm to police

# SophyAI POC installed in a parking lot

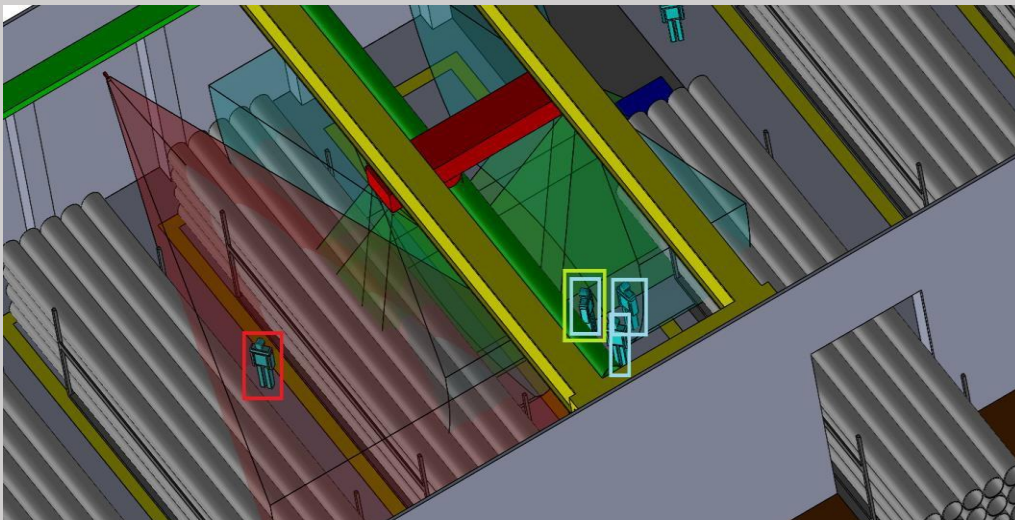


## Main functionality: real time status of parking

- Feed from a single camera, no GPS
- Presence of unauthorized people around vehicles
- Time of parking
- Number of free parking lots
- Control of parking payment status, alarm is sent
- Picture alert sent when people loitering around car



# SophyAI for security in a gantry crane operation in a steel mill

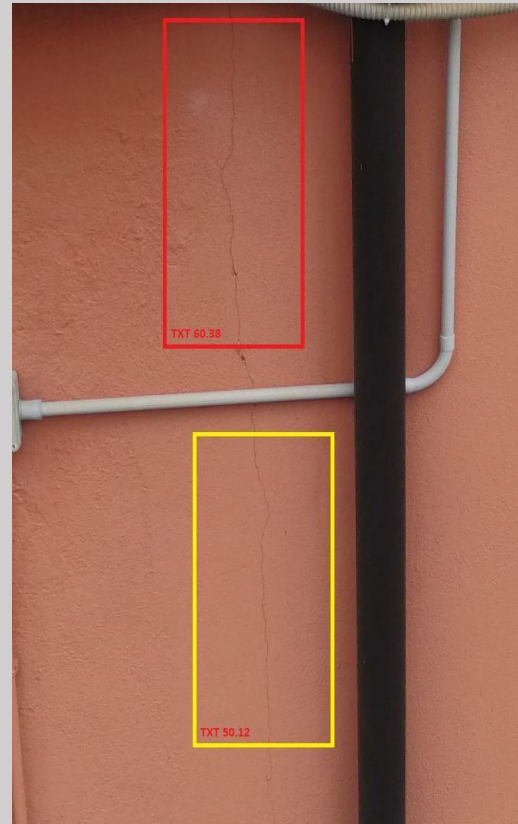
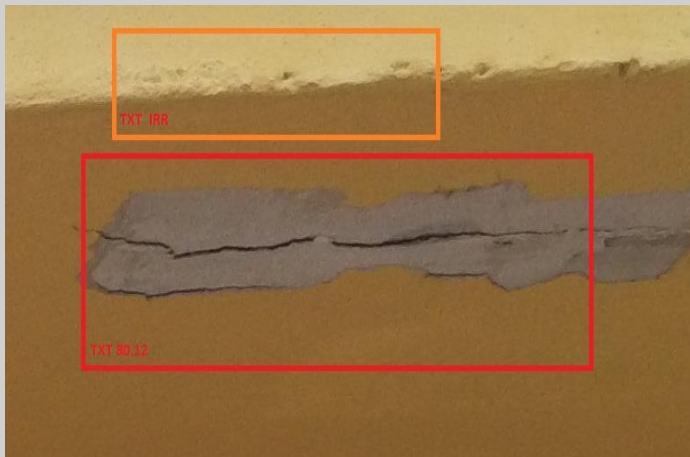
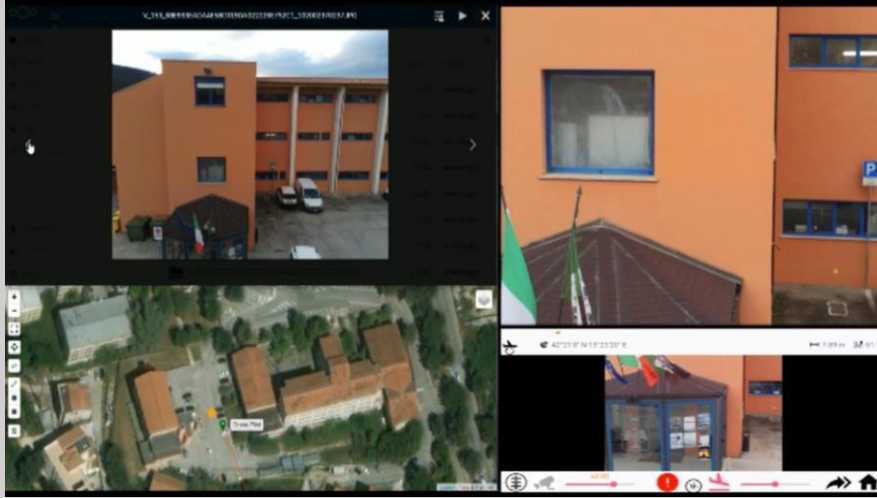


## Main function: safety and security in gantry crane operation

- 4 Cameras, 2 (optional) lidars on the crane
- 1 or more site cameras
- Position of people, trucks
- Control and backlog of interference between cranes and objects
- Identification and localization of people underneath the crane
- Geofence, time zones control
- Automatic danger messages: man down, person in not authorized area, person on the crane path
- Check of protective equipment (helmets, etc)
- Device for crane operator to check whether people in danger even if they operators do not see them



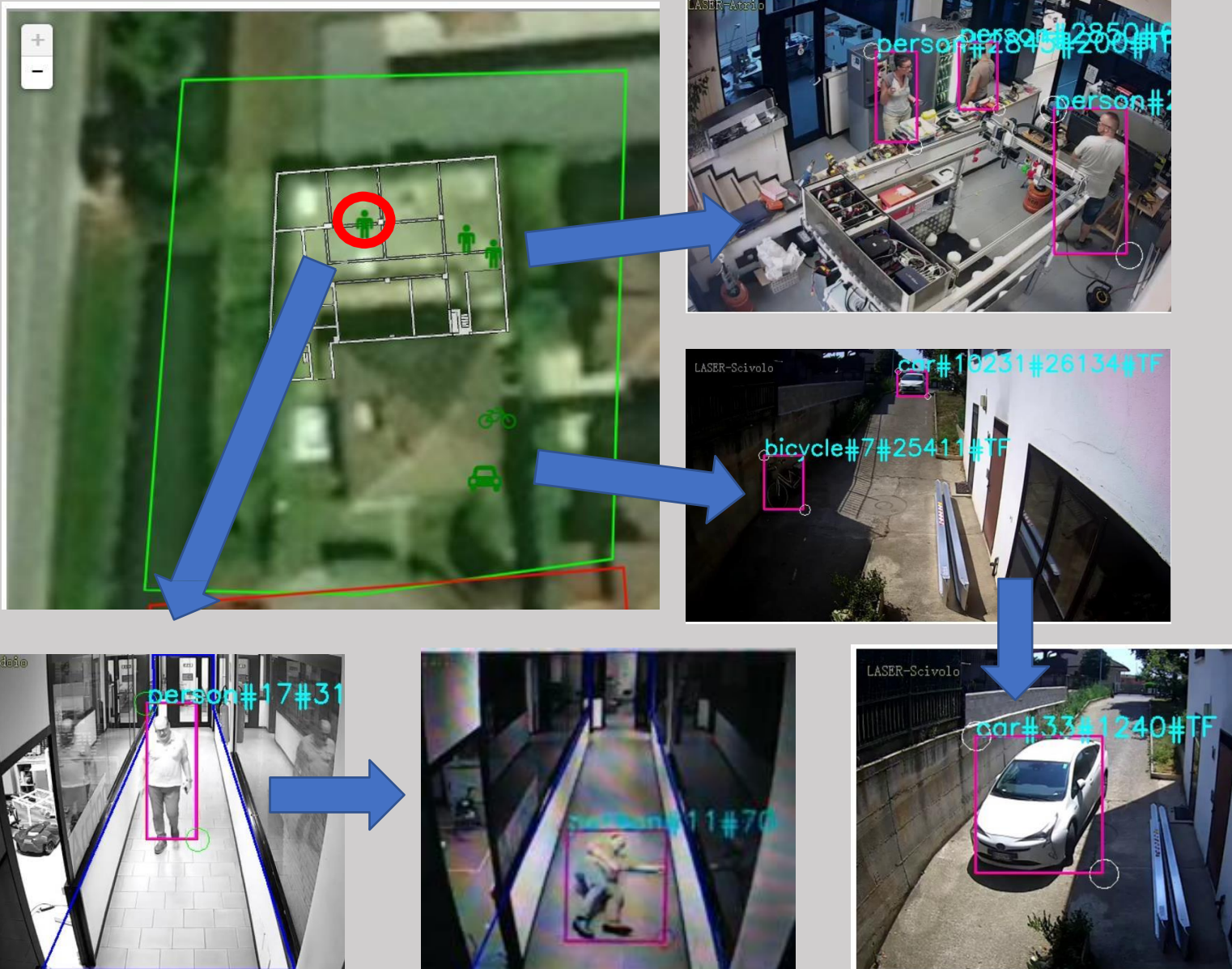
# SophyAI: 5G drones fleet management for automatic Cracks detection on buildings



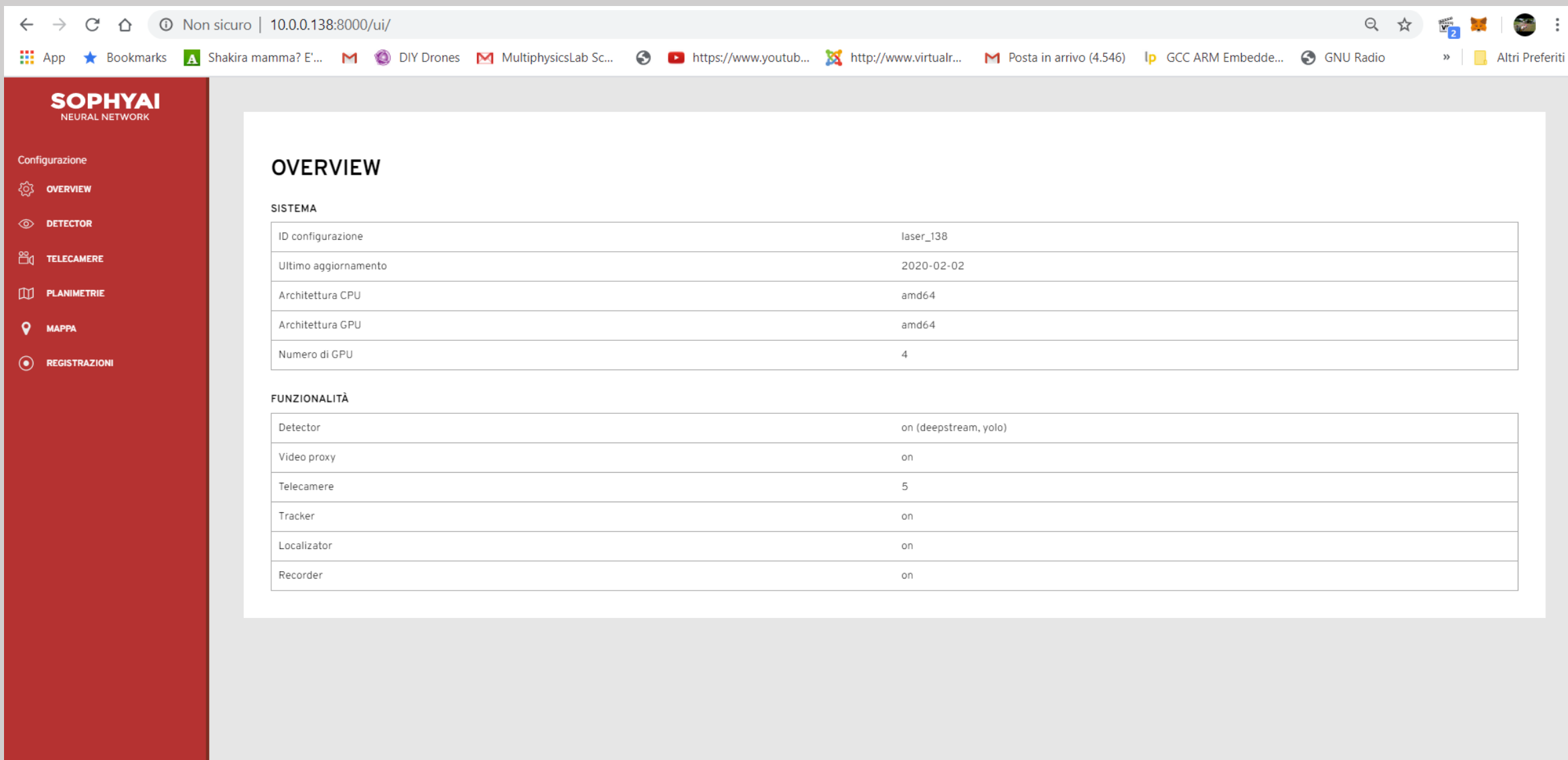
## Drones fleet management by 5G

- SophyAI module for drones pilot and drones management
- Detection of building cracks via neural network
- Realtime work force management
- Plan inspection data and time
- Collecting high resolution and georeferenced pictures taken by drones and pilot operators
- Realtime video sharing on SophyAI platform
- Blockchain integration for data notarization

# SophyAI assistance installed in an office environment



- Data collected from 8 cameras
- Position of people, cars, bike
- Control and historicization of people entries
- Position of "collaborative" people
- Identification and localization of people inside the plant
- Integration with smart and IOT devices.
- Geofence, time zones control
- Automatic danger messages: Man Down or Person in not authorized area
- Smart Parking
- Check of protective equipment (helmets, etc)
- Automatic actions (automatic gate opening, messages from speakers, interaction with app, etc.)







← → ↻ 🏠 ⓘ Non sicuro | 10.0.0.138:8000/ui/?p=detector 🔍 ☆ 📁 🦊 🌐

📱 App ★ Bookmarks 📄 Shakira mamma? E'... 📧 DIY Drones 📧 MultiphysicsLab Sc... 🌐 https://www.youtub... 🌐 http://www.virtualr... 📧 Posta in arrivo (4.546) 📄 GCC ARM Embedde... 🌐 GNU Radio » 📁 Altri Preferiti



37



# SOPHYAI : CAMERA MODULE CONFIGURATION

← → ↻ 🏠 ⓘ Non sicuro | 10.0.0.138:8000/ui/?id=atrio&p=camera-edit

App ★ Bookmarks 🟢 Shakira mamma? E'... 📧 DIY Drones 📧 MultiphysicsLab Sc... 🌐 https://www.youtub... 🌐 http://www.virtualr... 📧 Posta in arrivo (4.546) 📧 GCC ARM Embedde... 📧 GNU Radio » 🟡 Altri Preferiti

**SOPHYAI**  
NEURAL NETWORK

Configurazione

- ⚙️ OVERVIEW
- 👁️ DETECTOR
- 📹 TELECAMERE
- 📐 PLANIMETRIE
- 📍 MAPPA
- 🔴 REGISTRAZIONI

## ATRIO - MODIFICA

Uri (\*)

Detector

on ▼

Recorder

attiva con qualsiasi detection ▼

**SALVA**





# SOPHYAI : CAMERA FILTERING CONFIGURATION

← → ↻ 🏠 ⓘ Non sicuro | 10.0.0.138:8000/ui/?id=corridoio&p=camera-filter 🔍 ☆ 📱 🐱 🌐

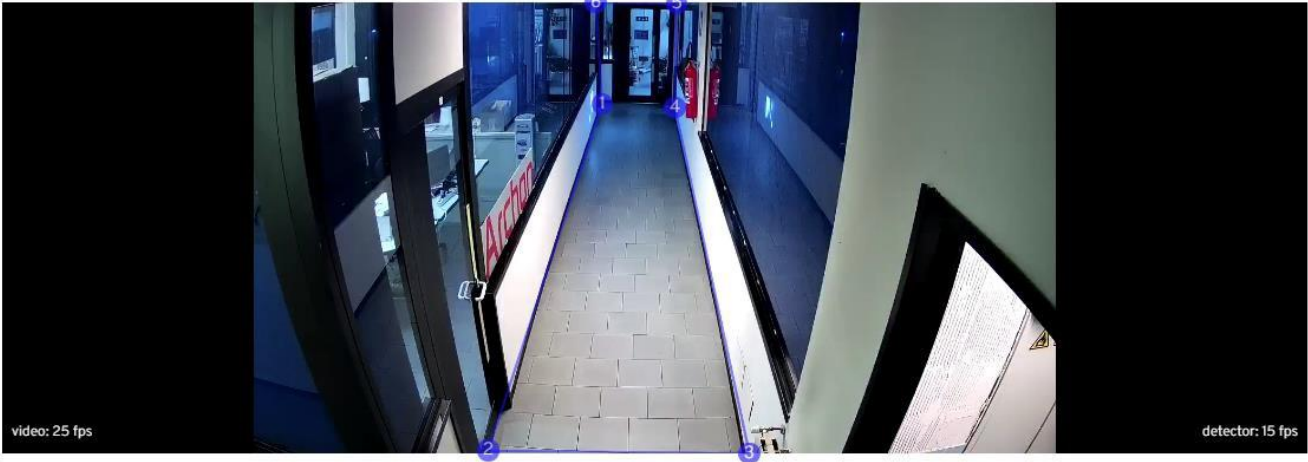
📱 App ★ Bookmarks 📄 Shakira mamma? E'... 📧 DIY Drones 📧 MultiphysicsLab Sc... 🔄 📺 https://www.youtub... 🌐 http://www.virtualr... 📧 Posta in arrivo (4.546) 📄 GCC ARM Embedde... 📻 GNU Radio » 📁 Altri Preferiti

**SOPHYAI**  
NEURAL NETWORK

Configurazione

- ⚙️ OVERVIEW
- 👁️ DETECTOR
- 📹 TELECAMERE
- 📖 PLANIMETRIE
- 📍 MAPPA
- 📍 REGISTRAZIONI

## CORRIDOIO - CONFIGURA FILTER



video: 25 fps

detector: 15 fps

**SALVA** **SALVA E CHIUDI**

☐ Abilita zona di esclusione

**AGGIUNGI PUNTO**

**RIMUOVI PUNTO**

☒ Abilita zona di inclusione

**AGGIUNGI PUNTO**

**RIMUOVI PUNTO**



# SOPHYAI : CAMERA MAPPING CONFIGURATION

Non sicuro | 10.0.0.138:8000/ui/?id=corridoio&p=camera-localizator

App Bookmarks Shakira mamma? E'... DIY Drones MultiphysicsLab Sc... https://www.youtub... http://www.virtualr... Posta in arrivo (4.546) GCC ARM Embedde... GNU Radio Altri Preferiti

**DETECTOR**

TELECAMERE

PLANIMETRIE

MAPPA

REGISTRAZIONI

45.511854

Longitudine del centro della mappa (\*)

9.847242

Piano (\*)

1

Rotazione della telecamera (\*)

-5

video: 24 fps detector: 16 fps

SALVA SALVA E CHIUDI

Leaflet



# SOPHYAI : MAP DIGITAL TWIN PREVIEW

←

→

↻

🏠

Non sicuro | 10.0.0.138:8000/ui/?p=map

🔍

☆

📺

🐱

👤

⋮

App | Bookmarks | Shakira mamma? E'... | DIY Drones | MultiphysicsLab Sc... | https://www.youtub... | http://www.virtual... | Posta in arrivo (4.546) | GCC ARM Embedde... | GNU Radio | Altri Preferiti

**SOPHYAI**  
NEURAL NETWORK

Configurazione

⚙️

OVERVIEW

👁️

DETECTOR

📹

TELECAMERE

📖

PLANIMETRIE

📍

MAPPA


📍

REGISTRAZIONI

MAPPA

+

-



☒ piano 1

☐ piano 2

☐ piano 3

☐ piano 4

Leaflet





# SOPHYAI : SMART SENSE VIDEO RECORDING

← → ↺ 🏠 ⓘ Non sicuro | 10.0.0.138:8000/ui/?p=record-list

📱 App ★ Bookmarks 🟢 Shakira mamma? E'... 📧 DIY Drones 📧 MultiphysicsLab Sc... 🌐 https://www.youtub... 🌐 http://www.virtualr... 📧 Posta in

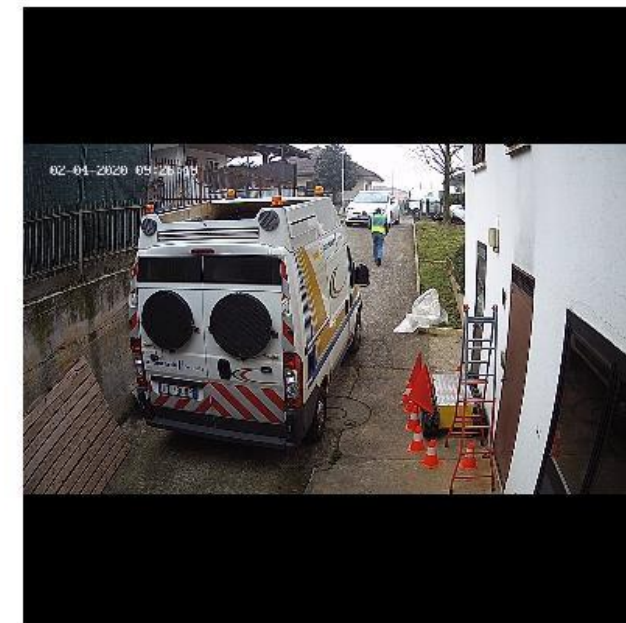
Configurazione

- ⚙️ OVERVIEW
- 👁️ DETECTOR
- 📹 TELECAMERE
- 📖 PLANIMETRIE
- 📍 MAPPA
- 🔴 REGISTRAZIONI

## REGISTRAZIONI

Telecamera ▲ ▼	Data ▲ ▼	Durata ▲ ▼
corridoio	2020/02/04 10:11:41	19s
corridoio	2020/02/04 10:11:21	19s
corridoio	2020/02/04 10:07:43	20s
corridoio	2020/02/04 10:06:53	19s
corridoio	2020/02/04 10:04:54	14s
corridoio	2020/02/04 10:01:48	10s
magazzino	2020/02/04 10:01:34	24s
corridoio	2020/02/04 10:01:32	10s
atrio	2020/02/04 10:00:58	4m 10s
atrio	2020/02/04 10:00:20	32s
atrio	2020/02/04 10:00:01	15s
scivolo	2020/02/04 09:59:06	52s
scivolo	2020/02/04 09:58:52	12s
corridoio	2020/02/04 09:58:41	13s
magazzino	2020/02/04 09:58:06	44s
corridoio	2020/02/04 09:58:04	12s
	2020/02/04 09:55:21	13s

10.0.0.138:8000/ui/?id=atrio\_2020-02-04-10-00-58.ts&p=record-view



DOWNLOAD

1.14 MB

10.76 MB

1003.71 KB

1.03 MB



The screenshot displays the SOPHYAI WORKFLOW interface. On the left is a dark blue sidebar with navigation options: Funzionalità (MAPPA, CONTROLLO DEGLI ACCESSI, LOG DELLE PRESENZE, NOTIFICHE, SENSORI DI MOVIMENTO) and Configurazione (UTENTI, DISPOSITIVI, LIVELLI DI AUTORIZZAZIONE, PLANIMETRIE, AREE). The main area shows a satellite map of a residential neighborhood. A large green rectangle highlights a specific area, which contains a smaller yellow rectangle and a red rectangle. A green circle with a person icon is located within the green rectangle, and a red circle is located within the red rectangle. On the right side, there are three panels: 'DETECTIONS' with a legend for 'uomo #1' through '#4' (green circles), 'SENSORI' with a legend for 'fa-map-marker, Squad 1', 'fa-map-marker, Motion Criobanca PV', and 'fa-exclamation-triangle, Squad 2' (red circle), and 'DISPOSITIVI' with a legend for various device IDs (green circle) and names (grey circles).

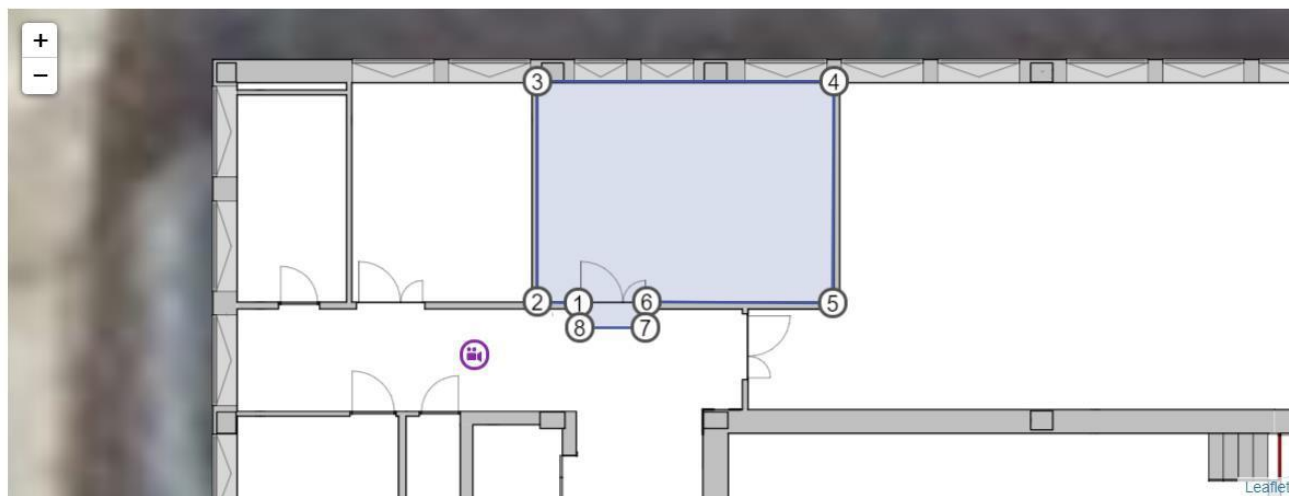


# SOPHYAI : ROOM CONFIGURATOR

Piano (\*)

1

Geofence



AGGIUNGI PUNTO

RIMUOVI PUNTO

SALVA





# SOPHYAI : MULTI USERS / DEVICES CONFIGURATION MODULE

**SOPHYAI**  
WORKFLOW

Funzionalità

MAPPA

CONTROLLO DEGLI ACCESSI

LOG DELLE PRESENZE

NOTIFICHE

SENSORI DI MOVIMENTO

Configurazione

UTENTI

DISPOSITIVI

LIVELLI DI AUTORIZZAZIONE

PLANIMETRIE

AREE

## UTENTI

+ AGGIUNGI

CERCA

Username ▲ ▼	Nome ▲ ▼	Cognome ▲ ▼	Abilitato	Creazione ▲ ▼	azioni
Altraprova	Prova	Nuovo	si	12/4/2019, 1:54:24 PM	<div>MODIFICA</div> <div>ELIMINA</div>
Prova nuovo	Prova	nuovo	si	12/4/2019, 1:05:00 PM	<div>MODIFICA</div> <div>ELIMINA</div>

**SOPHYAI**  
WORKFLOW

Funzionalità

MAPPA

CONTROLLO DEGLI ACCESSI

LOG DELLE PRESENZE

NOTIFICHE

SENSORI DI MOVIMENTO

Configurazione

UTENTI

DISPOSITIVI

LIVELLI DI AUTORIZZAZIONE

PLANIMETRIE

AREE

## DISPOSITIVI

CERCA

ID ▲ ▼	Nome ▲ ▼	Abilitato ▲ ▼	Utente ▲ ▼	Creazione ▲ ▼	azioni
08a2448a-b6d7-4912-a1bf-559810f7197a	ob9VmBD3GXolokSKtttDJEq	no		12/4/2019, 12:58:45 PM	<div>MODIFICA</div> <div>ELIMINA</div>
1ba855b5-489f-4ff1-87cd-13fb62418b9d	h80T+2JBi50bqFWISJ9P8Q	si	Roberto Navoni	2/3/2020, 2:32:30 PM	<div>MODIFICA</div> <div>ELIMINA</div>
211ad62a-fa16-41aa-9151-3aa877922c60	kVE6qHeSLGAhGtYq+hZBqg	si	Francesco Lorenzi	12/4/2019, 12:58:45 PM	<div>MODIFICA</div> <div>ELIMINA</div>
2342269b-293e-4acb-95bb-f895c4adfed4	lbv4lcSt/tQjQIabKT5Kyw	no		12/4/2019, 12:58:45 PM	<div>MODIFICA</div> <div>ELIMINA</div>
31c44c34-3368-4858-a361-60a0bac38a1b	o2FgoLrDihxxEw0M2hiWA	no		2/4/2020, 1:15:34 PM	<div>MODIFICA</div> <div>ELIMINA</div>
368a499b-095f-4680-9678-e883faece892	Injog/rs6JI2ikmbCV9GgA	si	Angelo Rossi	12/4/2019, 12:58:45 PM	<div>MODIFICA</div> <div>ELIMINA</div>



# SOPHYAI : MULTI USERS / DEVICES CONFIGURATION MODULE

**SOPHYAI**  
WORKFLOW

Funzionalità

MAPPA

CONTROLLO DEGLI ACCESSI

LOG DELLE PRESENZE

NOTIFICHE

SENSORI DI MOVIMENTO

Configurazione

UTENTI

DISPOSITIVI

LIVELLI DI AUTORIZZAZIONE

PLANIMETRIE

AREE

## UTENTI

+ AGGIUNGI

CERCA

Username ▲ ▼	Nome ▲ ▼	Cognome ▲ ▼	Abilitato	Creazione ▲ ▼	azioni
Altraprova	Prova	Nuovo	si	12/4/2019, 1:54:24 PM	<div>MODIFICA</div> <div>ELIMINA</div>
Prova nuovo	Prova	nuovo	si	12/4/2019, 1:05:00 PM	<div>MODIFICA</div> <div>ELIMINA</div>

**SOPHYAI**  
WORKFLOW

Funzionalità

MAPPA

CONTROLLO DEGLI ACCESSI

LOG DELLE PRESENZE

NOTIFICHE

SENSORI DI MOVIMENTO

Configurazione

UTENTI

DISPOSITIVI

LIVELLI DI AUTORIZZAZIONE

PLANIMETRIE

AREE

## DISPOSITIVI

CERCA

ID ▲ ▼	Nome ▲ ▼	Abilitato ▲ ▼	Utente ▲ ▼	Creazione ▲ ▼	azioni
08a2448a-b6d7-4912-a1bf-559810f7197a	ob9VmBD3GXolokSKtttDJEq	no		12/4/2019, 12:58:45 PM	<div>MODIFICA</div> <div>ELIMINA</div>
1ba855b5-489f-4ff1-87cd-13fb62418b9d	h80T+2JBi50bqFWISJ9P8Q	si	Roberto Navoni	2/3/2020, 2:32:30 PM	<div>MODIFICA</div> <div>ELIMINA</div>
211ad62a-fa16-41aa-9151-3aa877922c60	kVE6qHeSLGAhGtYq+hZBqg	si	Francesco Lorenzi	12/4/2019, 12:58:45 PM	<div>MODIFICA</div> <div>ELIMINA</div>
2342269b-293e-4acb-95bb-f895c4adfed4	lbv4lcSt/tQjQIabKT5Kyw	no		12/4/2019, 12:58:45 PM	<div>MODIFICA</div> <div>ELIMINA</div>
31c44c34-3368-4858-a361-60a0bac38a1b	o2FgoLrDihxxEw0M2hiWA	no		2/4/2020, 1:15:34 PM	<div>MODIFICA</div> <div>ELIMINA</div>
368a499b-095f-4680-9678-e883faece892	Injog/rs6JI2ikmbCV9GgA	si	Angelo Rossi	12/4/2019, 12:58:45 PM	<div>MODIFICA</div> <div>ELIMINA</div>



Q&A